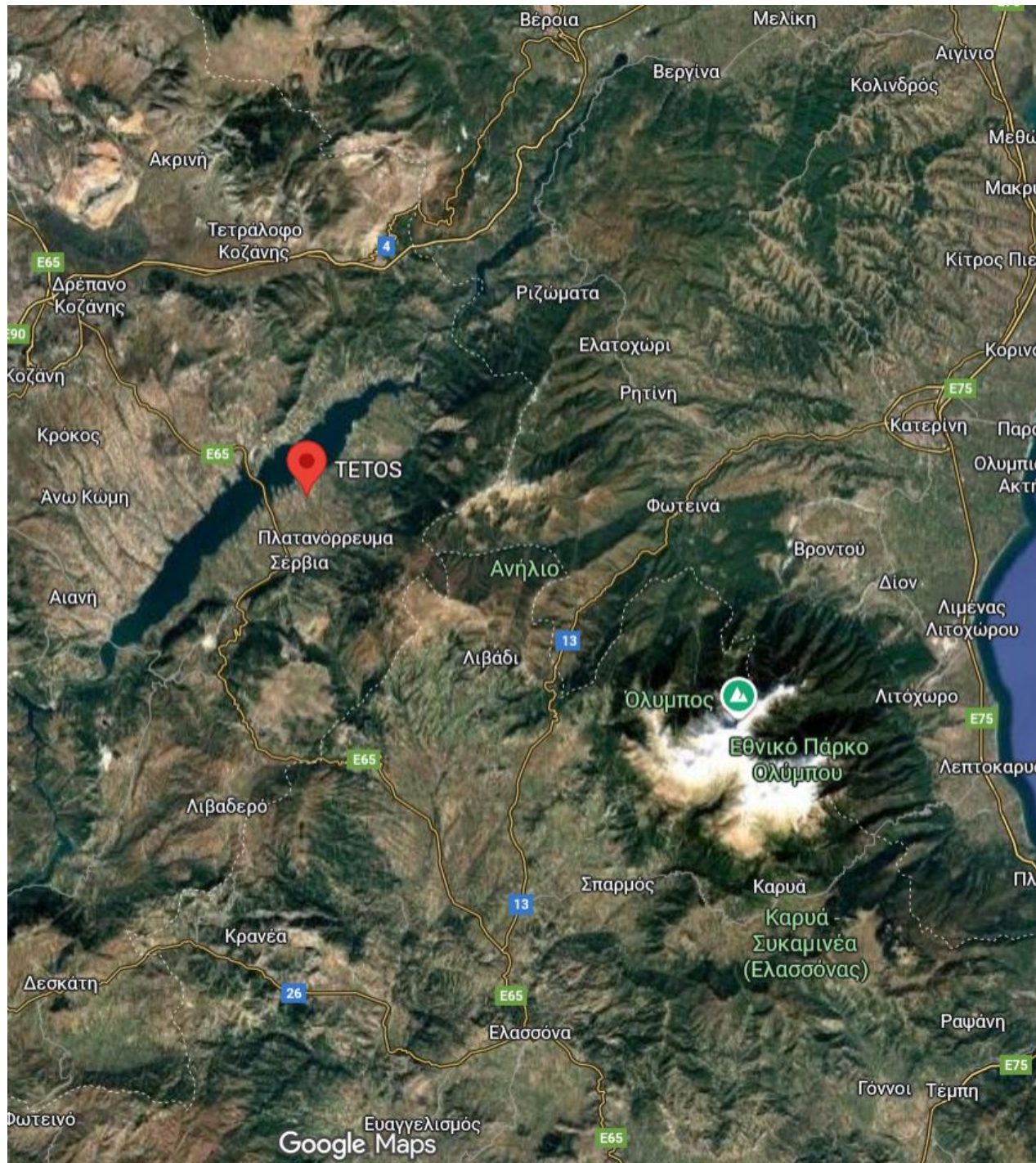


# ErgoSynergy holding AE



**ErgoSynergy**  
Constructions





The vertically integrated timber-construction unit of **ErgoSynergy Constructions** in Velventos, Kozani has resulted from the collaboration between the **ErgoSynergy Group SA**

and the company **TETOS**, which has three generations of experience in timber construction, beginning from the processing of local tree trunks, in order to ensure maximum cost-efficiency, quality, and durability of its materials.



In a covered factory space of 1,200 m<sup>2</sup>, the **ErgoSynergy Constructions** unit is equipped with all the necessary machinery, from the processing of tree trunks to laser and CNC cutting.





Laser machine for cutting and engraving



1

2

3

4



Design

Foundation

Structural Frame

Wall Construction



6

7

8



Roof Structure

Electrical & Plumbing Installations

Thermal Insulation & External Wall

Doors & Windows

The interior and exterior walls can be finished with plaster to achieve the typical appearance of a brick-and-concrete house, while full seismic protection and thermal insulation are ensured.



House with a plastered surface



House with a plastered surface



16/11/2023 13:22

House with a plastered surface



# Wooden Home



# Wooden Home



## Wooden Homes



Wooden houses with different window-frame colors and dimensions



# Foundation – structural frame – wall construction – thermal façade





# Mobile Home



# Thank You

Our goal is to provide the best possible service to our customers – so that, over time, they become valuable long-term partners.

